



The Cutting Edge

Monthly Newsletter of the Ottawa Lapsmith and Mineral Club

In this month's Newsletter:

Show Chair's Message	p. 1
Club News: Gem Show	p. 2
Studio Search Goes On	p. 3
News of the World	p. 3
Gem Show Poster	p. 4
Geology of Sardinia	p. 5
René Jules Lalique and "Lalique type"	p. 7
Classifieds: For Sale	p. 8
Painite	p. 8
Upcoming Gem Shows	p. 9
Calendar	p. 9
Membership form	p. 10

Mailing Address:

PO Box 36042 Wellington,
Ottawa, ON, K1Y 4V3
Phone: 613-850-5486

Website:

<https://olmc.ca/>

Facebook:

<http://www.facebook.com/OttawaLapsmithMineralClub>

Instagram:

<https://www.instagram.com/olmcn>

Show Chair's Message

Dear OLMC members,

Our September Gem and Mineral show is now only a few weeks away. All volunteers should contact me directly at showchair@olmc.ca. Everything is ready to go for the weekend of September 21-22.

The Gem Show is our main way of collecting funds to support a workshop. To make it successful and to showcase all that the club can offer, we need lots of volunteers.

I ask all members if they can to volunteer for one 2-hour block or more in a certain area of the show. **All volunteers get free access to the premises on the day of their volunteering 2-hour block.**

We have eight 2-hour timeslots: four slots on Saturday from 10h am to 6h pm, and another four slots on Sunday from 10h am to 5h pm. Contact by e-mail the Team Leader to offer your time based on the task you would like to fill. The list of stations and contacts is on **page 2** of this newsletter.

If you are available without a task preference, provide this information to the Show Chair, who will find a place where your help is most needed.

The Gem Show is always an amazing experience. I look forward to seeing you there.

Stéphane Jetté
OLMC Show Chair

All members are invited to submit articles, proposals, and thoughts that could be included in the newsletters. Also, feel free to send your Classified ads by e-mail to: news@olmc.ca

Call for Volunteers!



Please consider helping out the club by volunteering for some aspect of the show. Having enough or, even better, a surplus of volunteers allows the show committee to hold demonstrations, support the vendors and academic partners, and provide a safe and welcoming environment for shoppers and hobbyists alike. Contact showchair@olmc.ca. Just two hours of your time is all we ask.

IMPORTANT NOTE: The OC Transpo bus route that passes by the Sportsplex is no longer the 95. Bus routes 74 and 75 pass by the location.

Show Areas and Team Leads

Friday Venue Setup: Calvin Jones

Makers Market: Vicki Jasperse

Admissions: Catherine Garrett

Demonstrations: Eric Clara

Ushers: Stéphane Jetté

Flat Lap & Fish Pond: Eric Clara

Membership: Nathalie Bourget

Sunday Venue Takedown: Calvin Jones

Door Prizes: Jean-Guy Bradette

Makers Market: Volunteer, Sell Your Crafts

This is a call-out to club members to volunteer their time as a seller or as a volunteer sales counter staffer at our OLMC Makers Market during our 56th annual OLMC Gem, Mineral and Jewellery Show. The club is back at the Nepean Sportsplex the weekend of September 21-22, 2024, and everyone is looking forward to another successful show!

If you are interested in selling your creations or any other lapidary or jewellery-making items that you have made, please contact Vicki Jasperse, so that she can plan the set-up. All submissions are welcome - gemstones, cabochons, finished jewellery and other related member creations, rock slabs and specimens. Submissions must be described in a standard inventory form that can be provided on request.

Each seller will be allocated a space of roughly 12" by 20". More space will be given if possible. As a seller, you will keep 80% of your item sale proceeds, with the remaining 20% retained by the OLMC to support club operations.

As always, there is a need for volunteers to staff the OLMC sales counter. Shifts are only two hours in duration, so please inform Vicki if you can assist on the Saturday or Sunday. A final schedule will be sent out once shifts are filled.

Looking forward to hearing from you! -- Vicki Jasperse, OLMC Silversmiths

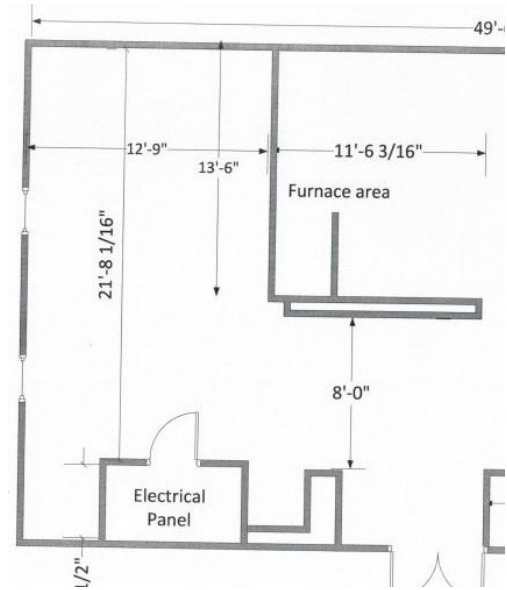


Studio Search Goes On

During the summer, the Executive Committee looked at several properties around Ottawa, in the hopes of finding a suitable and affordable space for a studio/workshop. The search was extended to include Hull and the greater Ottawa area.

In June, the team inspected one property in the Westboro area that was on the high end for rent. But, the landlord had the intention to end the lease after some time in order to sell the place. Two other locations in Ottawa, and another potential site in Hull, were too expensive. There was a location near Montreal Road, which was rejected because it was not zoned commercial. There was a location near St Laurent that was rejected because it was in a poor location with no bus access.

The Executive Committee continues the search. They are looking at more properties to lease in September.



Above: Part of a mock-up floor plan for one of the rejected properties, by Calvin Jones

News From Around the World

[Miners in Botswana uncover 2,492 carat diamond](#) : Canadian mining company Lucara Diamond Corp found the diamond at their Karowe mine in Botswana. In the last ten years, the same mine has found four other large rough diamonds. There is video of Botswana's President Mokgweetsi Masisi having [an amusing reaction](#) when presented with the stone.

[Matching Sets of Dinosaur Footprints in South America and Africa](#): An international research team found matching sets of Early Cretaceous dinosaur footprints on both sides of the Atlantic Ocean. Dinosaurs made the tracks 120 million years ago into mud and silt along ancient rivers and lakes on what was once the supercontinent Gondwana. Currently, the two sets of footprints are 6,000 kilometers away from each other.

[Spectacular images of Icelandic lava flows](#): An Icelandic Coast Guard helicopter flew over the volcanic eruption on the Reykjanes Peninsula and took photographs of the hot lava flowing from a fissure along the along the Sundhnúkaíggar crater. A new fissure eruption started on Reykjanes Peninsula on August 22, the sixth eruption in the area since December 2023.

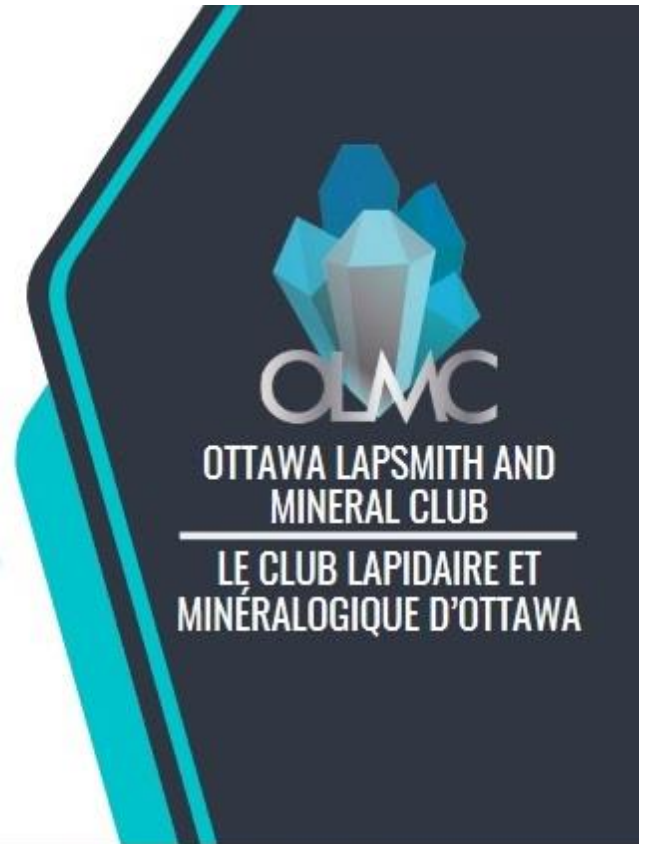
[Cynaide spill at Yukon Gold Mine](#): The spill happened July 12 at the Victoria Gold Corp mine. The company states in the press release, "There can be no assurance that the Company will receive authorizations necessary to restart production." On August 14, the company announced that the Yukon Government wants the appointment of a receiver over the company and its property and related relief pursuant to the Courts of Justice Act (Ontario).

[Critical minerals shipping via Churchill again](#): On August 16, the first shipment in two decades shipped out from Port of Churchill, Manitoba. The load of zinc concentrate was shipped by the Arctic Gateway Group. They intend to restore the Hudson Bay Railway, expand the port, and enhance the Arctic trade corridor to international markets.

56^{th/e}

Annual Gem, Mineral & Jewellery Show & Sale

Salon annuel des pierres, minéraux et bijoux



SEPT 21-22, 2024



Sept. 21, 10:00–18:00

Sept. 22, 10:00–17:00

**NEPEAN SPORTSPLEX
CURLING RINK
1701 WOODROFFE AVENUE
OTTAWA**

Tickets: \$8

Children aged 12 and under, free
Parking is free at the Sportsplex
Door prizes

Billets: \$8

Les enfants de 12 ans et moins, gratuit
Parking gratuit
Prix de présence



Instagram:
@olmcnews



Website:
www.olmc.ca



FaceBook:
<https://www.facebook.com/OttawaLapsmithMineralClub>



Geology of Sardinia

Sardinia has ancient origins. Its rock formations started in the Paleozoic (543-245 million years ago), perhaps pre-Palaeozoic era. Its base has close similarities with those of Spain and France, consisting of strong layers of sheeted rocks along parallel planes (schists) with rich deposits of lead, iron, and copper. These mineralizations have been exploited by humans since the Prehistoric age.

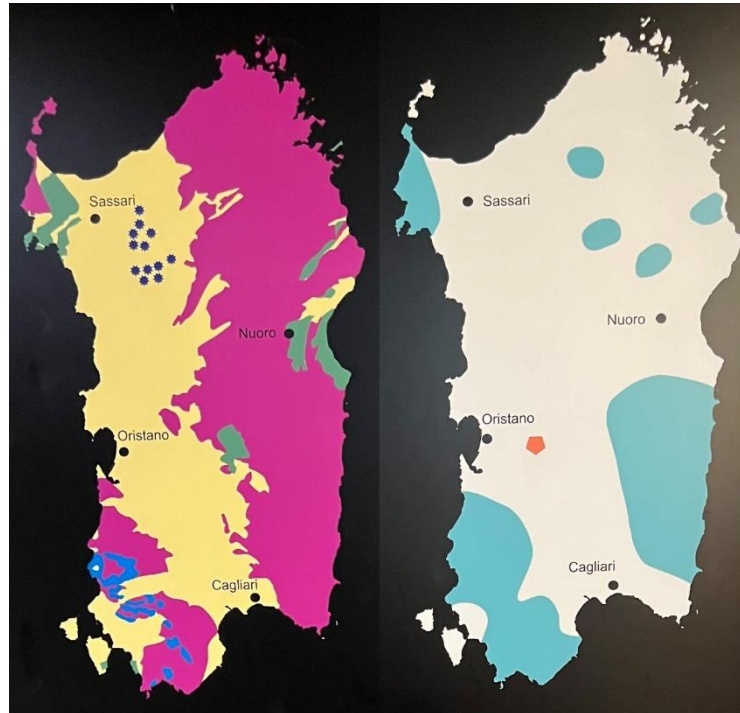
Sardinia was not always an island. The Sardinian-Corsican block broke away from the mainland during the Oligocene period 35-22 million years ago. It began to shift, rotating 30 degrees in the south-eastern direction to reach its current north-south orientation.

Around 3.2 million years ago, volcanic activity created what is known as the Campidano plain in the central-southern part of Sardinia, and the formation of the Monte Arci obsidian vein. This deposit of volcanic glass, formed by the rapid cooling of lava, had a tremendous importance for the prehistoric western Mediterranean Neolithic populations.

During the Quaternary era (since 1.8 million years ago), climate changes combined with phases of expansion and retreat of glacial ice have shaped the island. During cold periods, glacier formation lowered the sea level to 130 meters below the present level. During the ice phases, for long periods Sardinia and Corsica were linked. A strait only 7.5 kilometers long separated Cape Corsica from the island of Caprala in the Tuscan Archipelago. The situation promoted contact between human populations and provided the conditions to begin the human colonization of Sardinia during the Paleolithic age.

There is a Historical and Environmental Geomining Park of Sardinia, which spans many municipalities and mining sites. The park was created at the urging of experts and enthusiasts to recognize Sardinia's great technical, scientific, and cultural heritage that is represented by the ancient mining period of Sardinia. The international value of the Park was confirmed in 2007, when the park became a member of the GEOPARKS European and global network, under the auspices of UNESCO.

<https://parcogeominerario.sardegna.it/en/category/geological-sites/>



Display at Museo Archeologico Nazionale di Cagliari; OLMC News

Yellow: volcanites and sediments of the Tertiary-Quaternary
 Green: Limestones and dolomites of the Mesozoic Era
 Pink: Paleozoic granite-schist-metamorphic basement
 Blue: Cambrian limestones and dolomites
 Cyan: Major mining areas
 Purple Stars: Major eruptive centres of the Quaternary
 Orange Pentagon: Monte Arci obsidian vein



Photos clockwise from above:
Neolithic ruins Nuraghe Albucciu
near Olbia; Isola Budelli with
Sardinia in the background; rock
formation at Isola Budelli
harbour; wind-sculpted Roccia
dell'orso near Palau



René Jules Lalique and “Lalique type”



Detail of necklace: gold, enamel, opals, and amethysts, by Lalique circa 1897–99; Wikimedia Commons as part of a project by the [Metropolitan Museum of Art](#)

Boucheron (respectively founded 34 years and 15 years earlier, and already associated with royalty). Five years after that, in 1886, and with some financial help from his mother, Lalique took ownership of jeweller Jules Destape’s workshop. In 1890, Lalique opened his first jewellery store in the Opéra district of Paris. Soon after, he started eschewing precious stones in his work, and began to use less common materials like semi-precious stones, ivory, horn, and glass. When he did use gemstones, it was more for the look and not the value of the material.

Though he continued to make sculptures and drawings, he became famous for his Art Nouveau style jewellery inspired by the natural world, and that was displayed in exhibitions around Europe. His designs came to be known as “Lalique type”.

In the 1920s, he started creating with glass in the Art Deco style. For the ship SS Normandie dining room, he designed walls of lighted glass and coloured glass columns. For St. Matthew's Church at Millbrook in Jersey in the Channel Islands, which became known as the “Glass Church”, he designed the interior fittings, cross, screens, altar pieces, and font. Many of these designs included motifs of plants, flowers, and flowing lines.

There is still a [Lalique store](#) (four 5-star reviews on Yelp) at 11 Rue Royale, in Paris, and they have a page on Facebook.

Sources: Jean Lahor, [Art Nouveau](#), Parkstone International, 2012, page 184; and [Wikipedia](#)

Born in April 1860, in Aÿ, Marne, France, René Lalique became famous for his realistic natural designs in glass -- bottles, vases, jewellery, chandeliers, clocks, and even automobile hood ornaments. He died on May 1, 1945

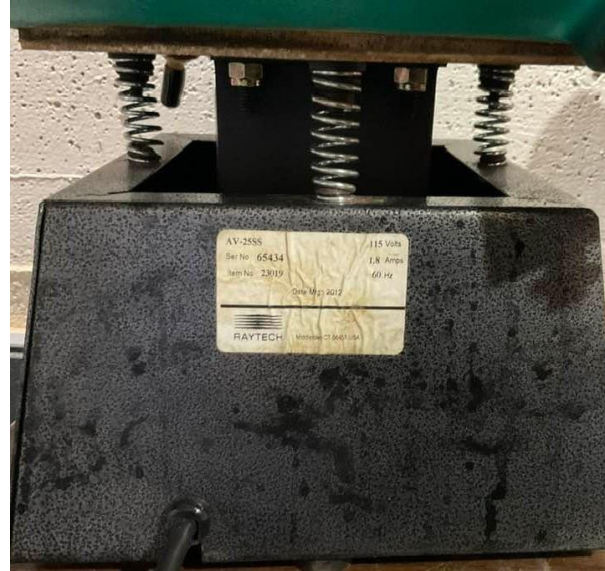
In 1872, at twelve years of age, he took drawing lessons at the Lycée Turgot. Two years later, he began studying at the Crystal Palace School of Art Sydenham in London. Then in 1876, he was hired as an apprentice to goldsmith and art nouveau jeweller Louis Aucoc in Paris. In Aucoc's studio, he learned about jewelry production and design, while also attending evening classes at L'Ecole des Arts Decoratifs.

Within five years, Lalique was working as a freelance designer for several French jewellery firms, including Cartier and



Car hood ornament by Lalique at the Toyota Automobile Museum; photo by Morio, 2013-09-20; Creative Commons

For Sale: metal-finishing vibrator for sale. Open to offers. Same model as this machine. <https://raytech-ind.com/metal-finishing/vibratory-tumblers/av-40ss-115v.html>
Contact Carole Mundy cmundy@sympatico.ca



For Sale: Faceting equipment. Would your club or any of its members be interested in possibly purchasing a high quality faceting machine with many extras including a full work stand/cabinet custom made for the machine and its components? Contact Conrad Baumgartner 613 656-5292

Painite $\text{CaZrAl}_9\text{O}_{15}(\text{BO}_3)$

Painite is found only in Myanmar, and it is the second-rarest mineral known. Often it is found with ruby, and can easily be mistaken for it; however painite has a Mohs hardness of 8 and specific gravity of 4.0-4.03 compared to 9 and 3.97-4.05 for ruby. Painite forms deep red hexagonal crystals. Colour ranges from red-brown to orange-brown.



Painite; Photo By Strickja, Wikimedia public domain

Painite is a borate crystal. It is the only mineral in which the borate has been found bonded to zirconium. Depending on quality, it may be valued as high as USD\$60,000 per carat. The largest known Painite specimen weighs 50 carats. It is one of six specimens held in the Natural History Museum in London.

English gem collector and dealer Arthur Pain obtained two crystals in Myanmar in 1952. Assuming they were rubies, he donated them to the British Museum in 1954, which published an analysis of the stones in 1957. In 2018, that George Rossman, a professor of mineralogy at CalTech, published a new analysis of the first painite specimen and provided a correction to its chemical makeup to include zirconium, and trace amounts of vanadium and chromium that provide the red colour.



Contact:

President
Kerry Day
pres@olmc.ca

Vice-President
Matthew Poirier
vicepres@olmc.ca

Secretary
Bill Hendrick
sec@olmc.ca

Treasurer
Catherine Garrett
treasurer@olmc.ca

Workshop Chair
Jean-Guy Bradette
workshop@olmc.ca

Membership Chair
Nathalie Bourget
memberchair@olmc.ca

Show Chair
Stéphane Jetté
showchair@olmc.ca

Newsletter Editor
Eric Clara
news@olmc.ca

Auction Team
auctions@olmc.ca

Upcoming Gem Shows in Your Area

Gem & Mineral Club of Scarborough presents "[Wonders of the Earth](#)" gem show September 14 & 15 at the Don Montgomery Community Center. Entrance is just \$6 for Adults and \$1 for Kids. Cash only for admittance but many vendors have various forms of payment inside to buy your own wonders to take home. There are many other activities

Ancaster [Gem, Mineral, Bead & Jewellery Show](#) October 5 & 6, at the Ancaster Fairground, 630 Trinity Road, Ancaster. This show features gem and mineral dealers, and guest speakers, hobby classes, and a school-children's program. The CGA offers complimentary gem identification, and usually a short free workshop or presentation.

[Gem Storm!](#) October 25-27, at the Event Centre, St. Lawrence College, 100 Portsmouth Avenue. Vendors bring their fantastic crystals, minerals, jewellery and so much more. A fun event for the entire family. Children under 12 are free with an adult and admission is still only \$5 for the whole three days.

Calendar of Events						
September 2024						
Sunday	Monday	Tuesday	Wednesday	Thursday	Friday	Saturday
1	2 Labour Day	3	4	5	6	7
8	9	10	11	12	13	14 Scarborough Gem Show
15 Scarborough Gem Show	16	17	18	19	20 OLMC Show SetUp	21 OLMC Show Day 1
22 OLMC Show Day 2	23	24	25	26	27	28
29	30 Truth and Reconciliation Day					



OLMC Membership Application

New Membership

Membership Renewal

Individual **\$20**

Family (2+ persons in the same residence) **\$30**

Benefits:

Monthly Newsletter

Newsletter advertisement: \$25 per year for members or \$55 for businesses
(Ten quarter pages per year over ten newsletters).

OLMC online auctions

OLMC field trips

More information can be found at <http://www.olmc.ca>
You can also go on our Facebook page: [OttawaLapsmithandmineralclub](https://www.facebook.com/OttawaLapsmithandmineralclub)

Names(s): _____

Address: _____

City: _____ Province: _____

Postal Code: _____ Telephone: _____

Please specify your e-mail address to receive OLMC's newsletter:

Do you require a receipt?

Yes

Payments are payable by **cash, cheque** to Ottawa Lapsmith and Mineral Club, or
E Transfer at treasurer@olmc.ca with the application form

Please mail your membership form and fees to:

Ottawa Lapsmith and Mineral Club
P. O. Box 36042 Wellington, Ottawa, On K1Y

4V3

Please note that all membership information is used only for administrative purposes.

Administration use only

Card provided: Yes No

Supervisor signed: Yes No

Date: _____