



The Cutting Edge

Monthly Newsletter of the Ottawa Lapsmith and Mineral Club

In this month's Newsletter:

President's Message	p. 1
Club News	p. 2
Thanks for the Show	p. 3
News Around the World	p. 4
Lassen Volcanic National Park, California	p. 6
Scenes from the Gem, Mineral & Jewellery Show and Sale	p. 7
Actinolite	p. 11
Meeting Schedule	p. 11
Classified Ads	p. 12
Membership form	p. 13

Workshop Address:

P.O Box 59028 Alta Vista
Ottawa, ON K1G 5T7
Phone: 613-850-5486

Website:

<https://olmc.ca>

Facebook:

<http://www.facebook.com/OttawaLapsmithMineralClub>

President's Message

After a three-year hiatus which drained our savings and forced us to close our workshop we had a successful Ottawa Gem and Mineral show. I would like to extend special thanks to our Show Chair Stephane Jette for organizing the show; our Dealer Chair Vema Ho for organizing the dealers; Calvin Jones for doing the layout; and Treasurer Rita Hudec for handling all the money issues. Thanks goes out to everyone who helped out and/or participated.

The three questions which we most frequently received were: A) When is the workshop going to re-open?; B) Are there going to be field trips?; and C) How do I get rid of my relative's collection?

As of this moment we owe \$45,000 on our old workshop. The lease is currently covered by our subtenant but for how long is anyone's guess. My game plan has always been to use the surplus beyond what we owe to afford a new workshop. We might be able to find a cheap rental somewhere. We shall see. I am not interested in signing a second lease!

Both the club proper and the MIG group are hosting field trips. One club trip was announced on Friday, and another is in the works. The MIG group had a field trip on Saturday, and another is in the planning stage.

If you have a collection to dispose of you can send me the details, and I can advertise it to the membership free of charge. Two collections found new homes this way over the last 18 months. The club also accepts all donations. Four collections were donated to the club over the last year. A third option is to use an auction house. One collection was auctioned off for good money last spring.

Kerry Day
OLMC President

The club has a **GoFundMe** page, if anyone wants to donate to on-going storage costs and for the future workshop rent. We very much appreciate donations. <https://www.gofundme.com/f/help-the-ottawa-lapsmith-and->

All members are invited to submit articles, proposals, and thoughts that could be included in the newsletters. Also, feel free to send your Classified ads by e-mail to: news@olmc.ca



Beryl Pit and Rose Quartz mine in Quadville, ON - Saturday, October 22

The little hamlet of Quadville is ~2.5 hours NW of Ottawa. It hosts two quarries which were mined or explored for Beryllium during WWII. They are currently owned and operated by Dave and Renee Patterson as

fee mineral collecting localities. In downtown Quadville, there is a general store called Kauffeldt's. We will meet there at 10 AM. We will go to the Rose Quartz mine first. The entrance fee of the Rose Quartz mine is \$10/person. Good quality Rose Quartz has a charge of \$2 to \$5 per pound. We will go to the Beryl pit second (optional). It also has a \$10/person charge. **There is no cell service in Quadville, so all transactions are cash.**

If you wish to travel with someone or behind someone then special arrangements can be made. Please contact pres@olmc.ca with your needs.



Mineral Interest Group (MIG) field trips

Within the OLMC there are several subgroups - Silversmiths, Faceters, Carvers and Mineral collectors (MIG). After a long hiatus, the MIG group is beginning to run field trips again. The places they go are usually small and only able to accommodate a small number of people. Their trips are advertised independently. To get on their mailing list, please contact John Montgomery at montgomeryjr50@gmail.com. The MIG group also hosts monthly Zoom meetings featuring speakers. Details are forwarded to everyone on John's list.

Additional field trips are in the works

We are always looking for new places to go which are friendly towards groups of collectors. If you know of such a place or would like to lead a field trip please forward the info to pres@olmc.ca. Previous field trips are listed at: <https://olmc.ca/programs.html>

MIG ONLINE Meeting

Date: October 17 at 7:00 pm.

Guest speaker: Kelsie Ojaste

Topic: What I Did Last Summer at the Canadian Museum of Nature

OLMC members can join the Mineral Interest Group to get invites to meetings.

Contact montgomeryjr50@gmail.com

In for some monthly meetings?

We had a great Gem Show and what a pleasure to be able to get together and talk about stone again! It gave us the idea to organize some members meetings. A survey will be sent out by e-mail to all members. Your answers will be greatly anticipated.

Dear OLMC Members and friends,

We had our first Gem Show since 2019, following all kind of apprehensions in the two preceding years. Accordingly, we started our show almost from scratch, only in March, 2022. Luckily, we could really on our past documents and some of our more experienced members who were active in setting the last Gem Shows. Special thanks goes to Eric Clara, Vema Ho, and Calvin Jones!



Many aspects were new or different from the 2019 show. Each volunteer leader did her/his best to get everyone involved. It contributed to the fact that we had no major problem reported, a good attendance, good items at the Show, and good sells for most vendors.

We all adapted to our new challenges to set a Successful 2022 Gem Show!

The exact amounts resulting from the show still have to be accounted; however, we already know that we had a good show, which in normal times would have generated enough income to cover the rental cost of a workshop for a year. Given our current financial liability for our old workshop, many aspects need to be considered, and it is not sure yet that we have sufficient funds to rent another workshop. What is sure is that this Gem Show was a major step in the right direction to get the OLMC running as it used to do. If we cannot clear our financial status enough to rent a new workshop right now, time and the 2023 Show will do it for sure! With this in mind, if you have any comments or recommendations for our next Gem Show, please inform us via showchair@olmc.ca

Notably, we have over two dozen of new members, some of which I know they wanted to be more active as volunteers and/or in the Gem Show organisation.

Please let us know ASAP so we can include you for the next GEM SHOW!

We won't be able to accommodate every proposition or potential improvement, but we can guarantee to consider everyone and every proposal. Sometimes, knowing about an aspect is already the first part to improvement.

Thanks to everyone!

Stéphane Jetté, Show Chair ☺



Oldest American Art Supply Store Uncovered

Archaeologists discovered possibly the oldest hematite mine in the Americas, a quarry in eastern Wyoming. Evidence shows that humans were digging there 13,000 years ago.

Hematite, also known as red ocher, was used in ritual ceremonies, as bug repellent or sunscreen, for medicinal use, and pigment for cave art.

Below: What hematite may look like



Archaeologists have been investigating the site since 1986, but they only just discovered this quarry in May. While excavating a new trench between 2017 and 2020, archaeologists found antlers and other animal bones used to dig out the hematite. Previous finds from the site include Clovis points, tools, and shell beads.

<https://www.pnas.org/doi/10.1073/pnas.2201005119>
(includes videos)

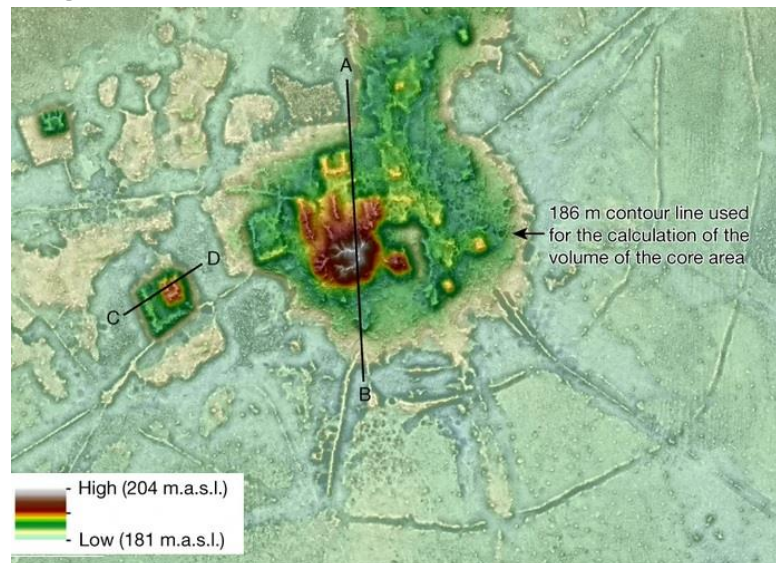
Pre-Hispanic Buildings Detected in Bolivian Amazon

Scientists have used LiDAR (light detection and ranging) to detect twenty-six settlement sites of the Casarabe culture in the Llanos de Mojos, Bolivia. The discovery proves indigenous populations of Amazonia created and managed early urban centres for thousands of years.

The Casarabe culture existed in the region between around 500 CE and 1400 CE, over an area of 4,500 km². They turned seasonally flooded Amazonian savannahs into useful farmland. It was suspected for a long time that evidence of complex pre-Columbia societies existed, but it had been concealed under a dense forest canopy in hard-to-reach places.

The LiDAR data expands the count of settlement sites to two large sites and twenty-four small ones, including fifteen that were already known. The structures include 5-meter high terraces and 21-meter high conical pyramids, canals, and water reservoirs.

<https://www.nature.com/articles/s41586-022-04780-4>



Lidar image of the large settlement site Cotoca, from www.nature.com: m.a.s.l. = metres above sea level

Oops! Large Sinkhole Appears near Chilean Copper Mine

A sinkhole about 25 meters in diameter and about 200 meters deep appeared in a mining area in northern Chile at the end of July.

The area is used by Canadian Lundin Mining. Areas were closed from the entrance to the work site of the Alcaparrosa mine, which is near the sinkhole.

In a statement, Lundin Mining said workers or community members were unaffected because the nearest home is more than 600 meters away, and the nearest populated area is almost 1 kilometer away.

Specialists with the National Service of Geology and Mining say they have not seen any material at the bottom, but there is a lot of water.

<https://www.reuters.com/world/americas/chilean-authorities-investigate-mysterious-large-sinkhole-near-copper-mine-2022-08-01/>

Rediscovered Morden Shark Fossil on Display

The remains of an ancient shark fossil recently rediscovered at the Canadian Fossil Discovery Centre are now on display in Morden, Manitoba.

The 83-million-year-old fossil was unearthed on a farm near Morden in 1975, and then been re-buried in the centre's storage room.

It is from the Cretaceous period. Usually shark fossils include teeth as the rest of their body is mostly cartilage, but this one has all the vertebrae but no teeth.

<https://news.umanitoba.ca/winnipeg-free-press-rediscovered-morden-shark-fossil-floats-into-special-territory/>



Shark fossil nicknamed 'Dave' now on display in Morden; photo from the Canadian Fossil Discovery Centre

Ottawa-Gatineau Geoheritage Day Oct. 8

This year a selection of sites within the National Capital Region will be hosted by experts. You can visit other sites on your own, or stay in and explore some spectacular geosites across Canada virtually through the Geoheritage Day website.

Event Details:

<https://earthsci.carleton.ca/outreach/explore-geoheritage-day>

Geoheritage Day web site: <https://geoheritageday.carleton.ca/>

Ottawa Gatineau Geoheritage Project site: <https://www.ottawagatineaugeoheritage.ca>



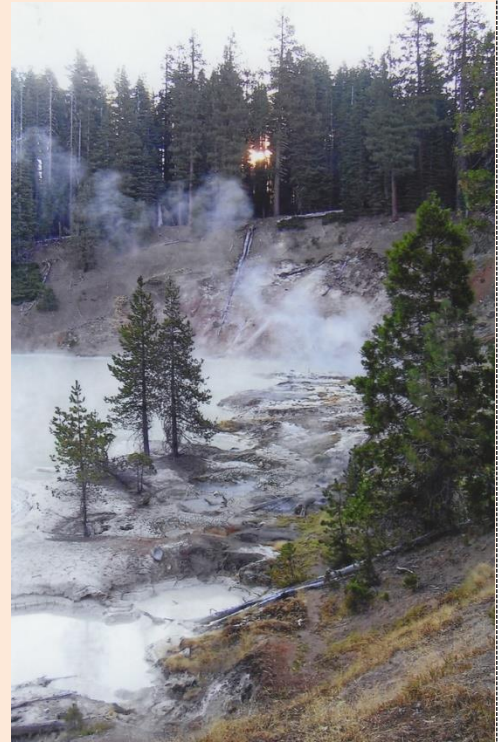
Photo from the Ottawa-Gatineau Geoheritage web site

~~~~ Lassen Volcanic National Park ~~~~

Lassen Volcanic National Park in California, is on the edges of several mountain ranges, where the Juan De Fuca Plate subducts beneath North America. The Lassen Volcanic Center started erupting about 825,000 years ago. The area has been volcanically active for about three million years.

At Lassen, all four types of volcanoes can be seen: cinder cone, composite or stratovolcano, shield and plug dome. Large plug dome and composite volcanoes are unusually close to smaller cinder cone volcanoes that surround the volcanic center. The most recent eruptions are from the Cinder Cone (~350 years ago) and Lassen Peak (~100 years ago).

Magma continues to come to the surface. The park experiences a good amount of hydrothermal activity -- steam and volcanic-gas vents (fumaroles), bubbling mud pots, boiling pools, and fractured steaming ground. The water comes from rain and melting snow from the surrounding highlands. Bumpass Hell is the largest hydrothermal area in the park. It is accessible by trail only from June to October. The second largest area is Devil's Kitchen at the end of a hiking trail.



Steam from Boiling Springs Lake; photo from the U.S. National Park Service



Painted Dunes is a pumice field near Butte Lake, past the Cinder Cone; photo from Lassen Volcanic National Park Photo Gallery

The Lassen area was a meeting point for at least four Native American Indian groups who live nearby: Atsugewi in the north and northeast, Yana and the related Yahi in the west, and Maidu in the south and east. The place was only used in summer due to bad winter weather, high elevation and the appearance of migrating deer.

California's gold rush in the 1840s meant a lot more people came through Lassen. Sections of the original pioneer trails are still visible. Peter Lassen, for whom the park is named, tried to establish a city, but various projects for mining, power development, and ranching did

succeed. One businessman managed to start a sulphur mine, which was bought out by the park corporation. That place is now known as the Sulphur Works.

<https://www.nps.gov/lavo/index.htm>



Scenes from the Gem, Mineral & Jewellery Show & Sale





Above: View of the Partners' area and vendor tables

Left: John Lavoie facets a stone

Right: Jennifer Latham carves with a dremel

Below: Calvin Jones brought his sphere making machine

Below Right: Sodalite sphere available from one of the vendors



Opposite Page

Top: Shoppers search for something eye catching

Middle Left: Natasha Girard and Shawna Coudé-Bradette announce door prize winners

Middle: An ammolite ring made and sold by a vendor

Middle Right: Bob Boisvert waits at the fish pond

Lower Left: John Montgomery and a fellow MIG member sell mineral samples

Lower Right: Nathalie Bourget is well prepared to enrol new club members





Show Partners were very busy presenting valuable information to the public about geology and mineralogy, and taking time to answer many questions.

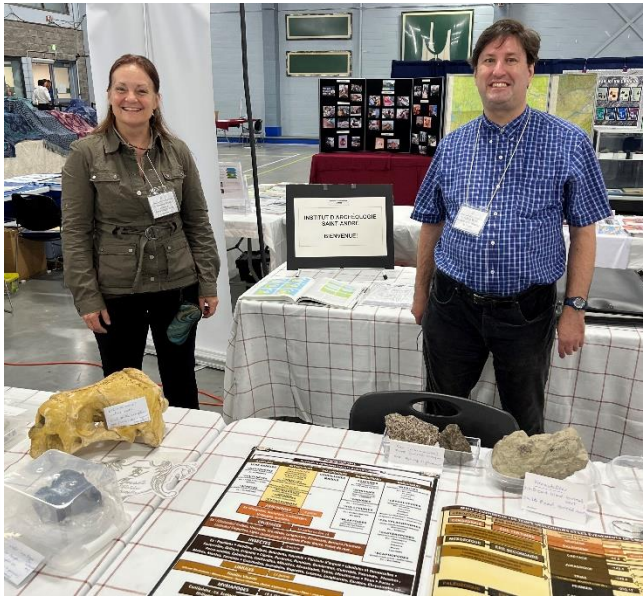
Top Left: Ottawa-Gatineau Geoheritage Project presenting local geology

Middle Left: Institut d'Archeologie Saint-Andre

Middle Right: Canadian Micro Mount Association

Lower Left: APGO Education Foundation & Mining Matters

Lower Right: Canadian Museum of Nature





Clockwise from the top

1: There were almost 60 vendors at this year's show and sale

2: Club display cases. There was also a television playing DVDs

3: Labradorite pendant polished, wire wrapped and sold by a local vendor

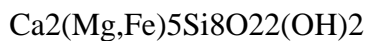
4: Another view of the show partner and club demonstration area

5: A vendor prepares her booth for approaching customers

6: Copper pendant with blue stone in the form of snake sold by a vendor



Actinolite



Actinolite has a monoclinic form with Mohs hardness of 5 to 6. It is similar to tremolite. Actinolite has more iron than magnesium, while tremolite has more magnesium than iron. The more iron, the deeper the green colour.

It is found in metamorphic rocks, such as contact zones around cooling igneous rocks, or from metamorphism of magnesium-rich limestone.

Actinolite can be silky lustrous, thickly fibrous, and elastically fibrous. Some forms are used as gemstones: a type of jade called nephrite, and a chatoyant form known as cat's-eye actinolite (aka jade tigerseye). Fibrous actinolite is one of the six recognised types of asbestos, with the associated health hazard.



Actinolite, courtesy of Wikimedia

Contact:

President

Kerry Day
pres@olmc.ca

Vice-President

Matthew Poirier
vicepres@olmc.ca

Secretary

Bob Boisvert
sec@olmc.ca

Treasurer

Rita Hudec
treasurer@olmc.ca

Workshop Chair

Jean-Guy Bradette
workshop@olmc.ca

Membership Chair

Nathalie Bourget
memberchair@olmc.ca

Show Chair

Stéphane Jetté
showchair@olmc.ca





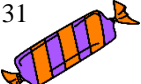
Newsletter Editor

Eric Clara
news@olmc.ca

Auction Team

auctions@olmc.ca

OLMC Meeting Schedule

October 2022						
Sunday	Monday	Tuesday	Wednesday	Thursday	Friday	Saturday
						1 
2	3	4 Silversmith video call 19:00	5 	6	7 	8
9 	10 	11	12	13	14 	15
16 	17 MIG video call 19:00	18 Silversmith video call 19:00	19	20 	21	22
23	24 	25	26	27 	28	29 
30	31 					

OLMC Classified Ads

Can't find the right piece of jewellery?
Come create something unique!
We have everything!



Canada Beading Supply

Serving customers for over 30 years

Your dream. Our beads. We help!

190 Colonnade Rd. S. Unit 8B, Ottawa

613-727-3886 (800-291-6668)

www.canbead.com



Pargem Designs

Your source for **hand-crafted wire-wrapped gemstone jewelry** made with 925 Sterling Silver & 14kt Gold Filled Wire, and of quality

Over 100 different hand-cut natural gemstone cabochons to choose from!

38 years of lapidary experience

Visit my Etsy web page

[etsy.com/ca/shop/PargemDesigns](https://www.etsy.com/ca/shop/PargemDesigns)

Contact me directly at:

pargem.designs@gmail.com



**Ottawa Lapsmith & Mineral Club
presents...**

Ottawa Gem, Mineral & Jewellery Show and Sale

Sat. Sept. 17 10:00 to 6:00

Sun. Sept. 18 10:00 to 5:00

Nepean Sportsplex Curling Rink

1701 Woodroffe Avenue, Nepean

\$8 Entrance Fee

Free Entrance for Children Under 12

**Free Parking
Door Prizes
Demonstrations
Mineral ID**



<https://olmc.ca>

OLMC Membership Application

☐ New Membership

☐ Membership Renewal

☐ Individual **\$20**

☐ Family (2+ persons in the same residence) **\$30**

Benefits:

☒ Monthly Newsletter

☐ Newsletter advertisement: \$25 per year for members or \$55 for businesses
(Ten quarter pages per year over ten newsletters).

☒ Silversmith online meeting 2/month

☒ Mineral Interest Group online monthly meeting

☒ OLMC online auctions

☒ OLMC field trips

More information can be found at <http://www.olmc.ca>

You can also go on our Facebook page: [OttawaLapsmithandMineralClub](https://www.facebook.com/OttawaLapsmithandMineralClub)

Names(s): _____

Address: _____

City: _____ Province: _____

Postal Code: _____ Telephone: _____

Please specify your e-mail address to receive OLMC's newsletter:

Do you require a receipt? ☐

Yes

Payments are payable by **cash, cheque** to Ottawa Lapsmith and Mineral Club, or
E Transfer at treasurer@olmc.ca

Please mail your membership form and fees to:

Ottawa Lapsmith and Mineral Club
P. O. Box 59028 Alta Vista, Ottawa, On K1G

5T7

Please note that all membership information is used only for administrative purposes.

Administration use only

Card provided: ☐ Yes ☐ No

Supervisor signed: ☐ Yes ☐ No

Date: _____